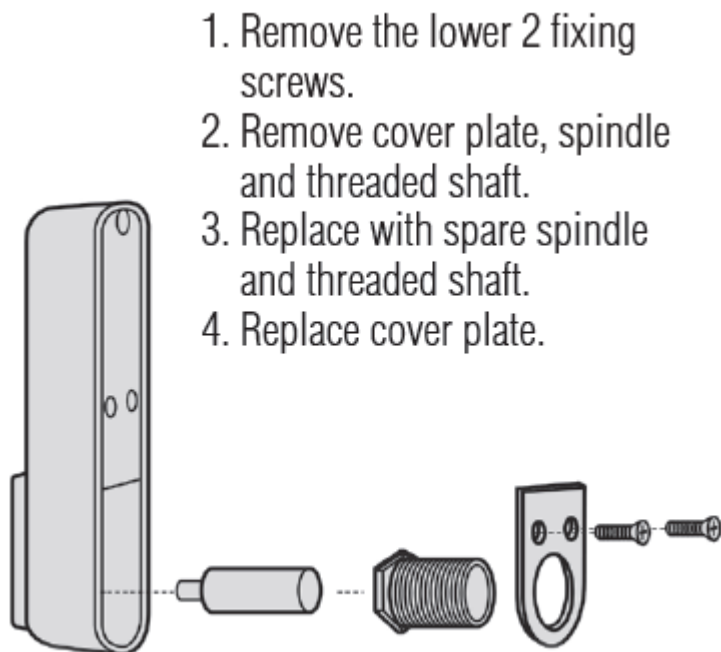


Special Notes

Please read carefully:

- Before installing the lock, load the batteries and familiarise yourself with the operation and programming.
- The handle will not turn until you enter the factory default Master Code 11335577 or the User Code 2244.
- Please see programming guide to set your own codes.
- Your KitLock is supplied ready to fit to doors up to 19mm (3/4") thick. For doors between 19mm (3/4") and 25mm (1") thick, you will need to install the 28.5mm (1 1/8") spare spindle (see below). A 9mm (3/8") spindle is also included for sheet metal doors (see below).



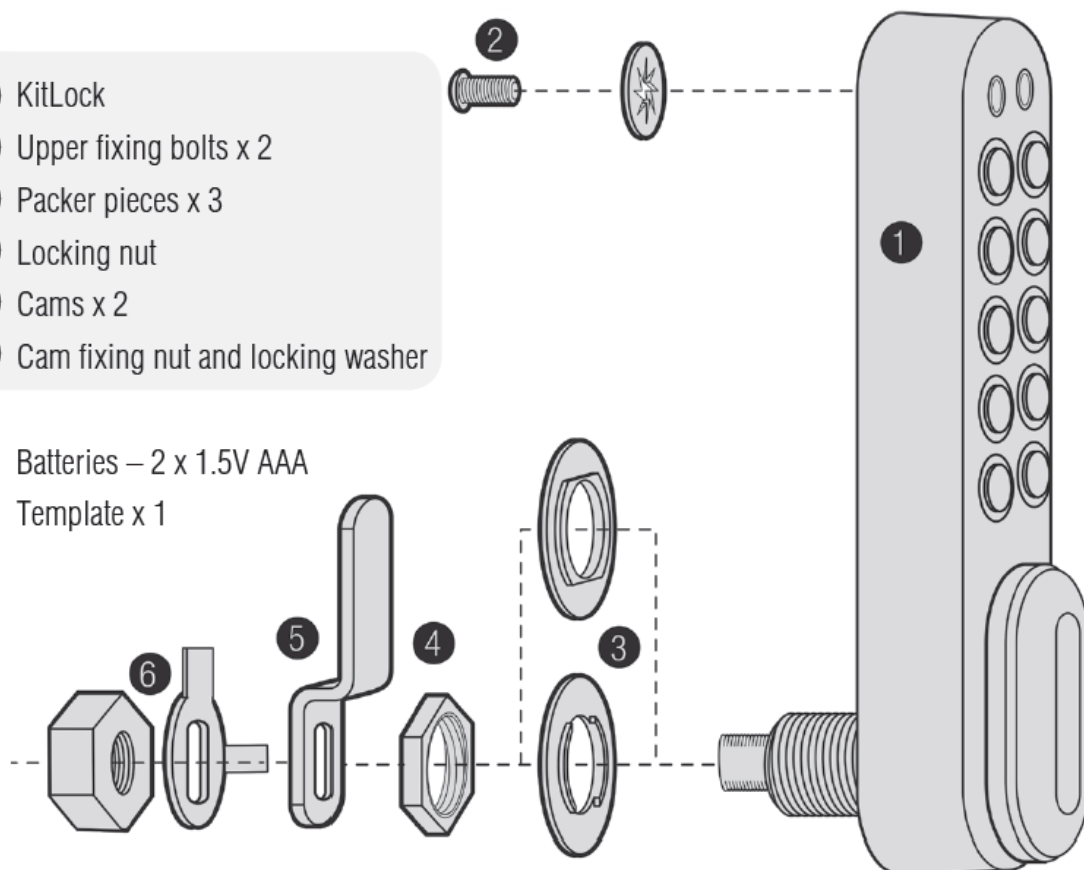
The KitLock can be fitted to:

A Cabinets, cupboards and lockers etc as a direct replacement for existing cam locks.

B It can also be fitted easily to cupboards and cabinets that do not have an existing locking device.

- 1 KitLock
- 2 Upper fixing bolts x 2
- 3 Packer pieces x 3
- 4 Locking nut
- 5 Cams x 2
- 6 Cam fixing nut and locking washer

Batteries – 2 x 1.5V AAA
 Template x 1



LOCKED



OPEN



KL1000 can be supplied vertically, left or right hand horizontal.



Installation Guide

A Replace existing cam lock with KitLock

Step 1 Remove existing cam lock.

Step 2 Place the 16mm (5/8") template hole over the hole left by the cam lock and mark the upper fixing hole.

Step 3 Drill the 6mm (1/4") upper fixing hole.

Step 4 Fit the KitLock to the door by passing the spindle through the 16mm (5/8") hole.

Step 5 If required, from the inside of the door, pass either of the packing pieces over the spindle to centralise the lock.

Step 6 Now secure the lock by threading the large nut onto the spindle.

Step 7 Fit one of the upper fixing bolts to suit your door thickness.

Step 8 Select and fit cam using the fixing nut and locking washer. Lock nut in place by folding over washer tabs.

Step 9 Now check the operation of the lock using the factory User Code 2244.

Step 10 If the lock is functioning correctly, **CHANGE THE DEFAULT MASTER CODE 11335577 and DEFAULT USER CODE 2244** and program the lock using the programming and operating instructions enclosed.

B New Installation

Step 1 Place template on door and mark upper 6mm (1/4") hole and lower 16mm (5/8") hole.

IMPORTANT NOTE: Before drilling fixing holes, please ensure the position of the KitLock when fitted will allow enough clearance for selected cam to work.

Step 2 Drill both fixing holes.

Step 3 Continue installation from step 4 to 10, above.